

PDAComm
A Comms Application for PDA's
OPERATION MANUAL

HYDROLOGICAL SERVICES Pty Ltd
48-50 Scrivener Street
Liverpool NSW 2170
Australia
Ph. 61 2 9601 2022 Fax. 61 2 9602 6971
Internet: www.hydrologicalservices.com
E-Mail: sales@hydrologicalservices.com

TABLE OF CONTENTS

1. Introduction 3

2. Product Overview..... 3

2.1 Overview..... 3

3. Installation 4

4. Operation 6

1. Introduction

The Hydrological Services PDAComm is a software application designed to operate on a PDA (Personal Digital Assistant or handheld computer), to provide communications to a MiniLog either through a hardwired RS232 connection or a Bluetooth interface. It will operate on either a Pocket PC platform or a Windows Mobile 5.0 platform and is backwards compatible with Windows CE.

What is Bluetooth ?

Bluetooth is the code name for a new wireless technology developed by Ericsson Inc., Intel Corp., Nokia Corp. and Toshiba. The technology enables data connections between electronic devices such as desktop computers, wireless phones, electronic organizers and printers in the 2.4 GHz range. Bluetooth replaces cable or infrared connections for such devices.

(Definition from www.braddye.com/glossary.html)

2. Product Overview

2.1 Overview

The PDAComm application provides a simple communications interface that allows interactive ascii communications. Data transactions during a communications session can be logged into a text file for later synchronisation to a PC.

Features include :

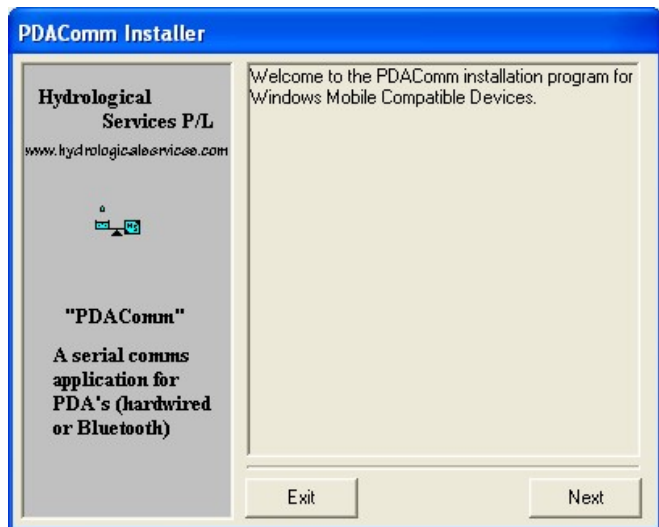
- Comm Port selection - Hardware RS232 and Bluetooth.
- Font size selection.
- 3 x Command buttons (for commonly used commands – Status, Dump, Help)
- Sessions can be logged to a file.
- Scroll left / right and up/down through the data.
- Automatic connection through a Bluetooth port (when selected)

3. Installation

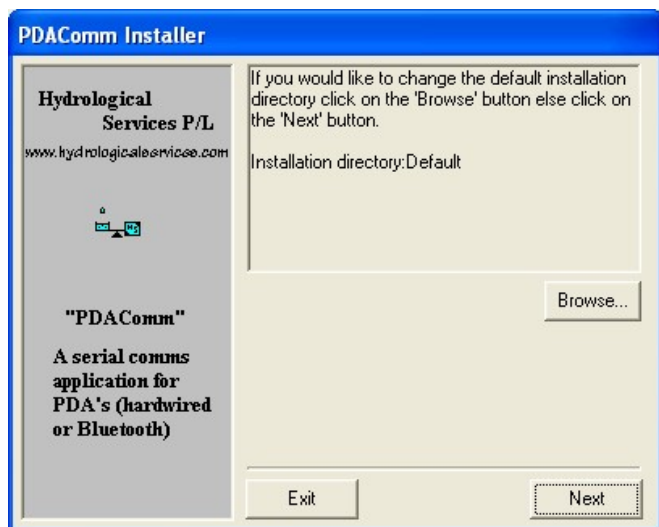
Install PDAComm application on your PDA as follows :

1. Make sure your PDA is “Active Sync’d” to your computer.
2. Select the appropriate install program depending on the operating system running on your PDA :
 - If your PDA is running in a “Windows Mobile 5.0” environment then run “PDACommInstall_WinMobile5.exe”
 - If your PDA is running in a “Pocket PC” environment then run “PDACommInstall_PocketPC.exe”
3. The following screens will appear as the installation progresses.

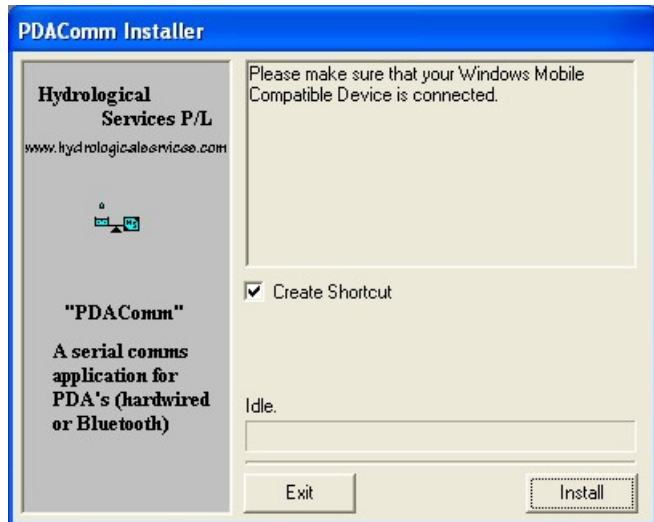
Click Next



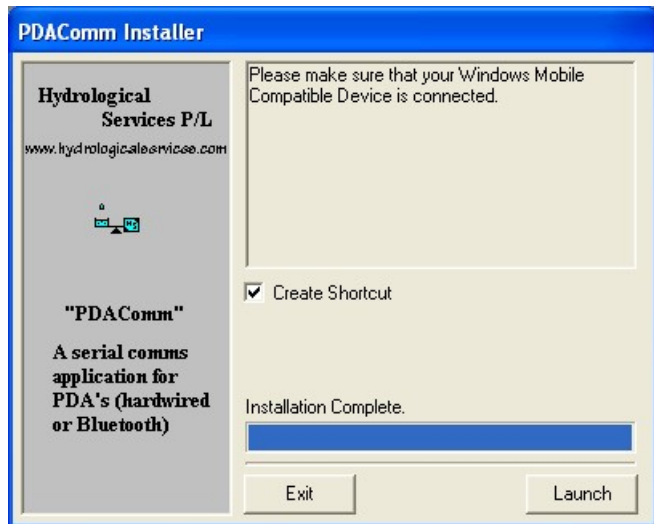
Click Next again



Make sure the PDA is connected to your computer and click Install

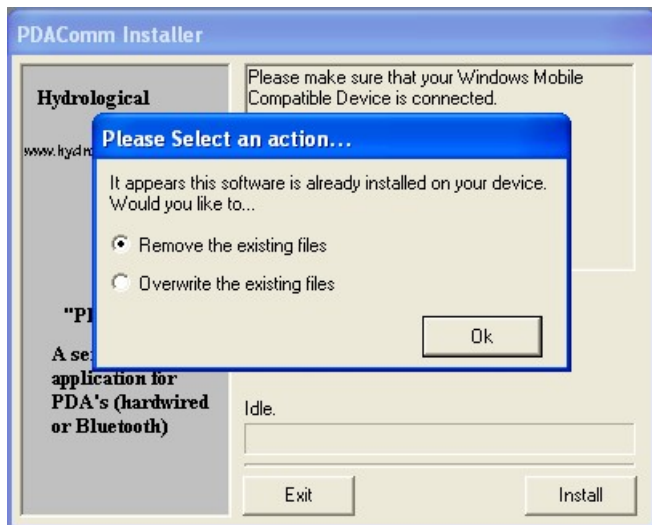


When the installation is complete click on Exit.



NOTE : If PDAComm was already installed on your PDA then you will see this screen earlier in the install process.

Leave the selection on "Remove existing files", press OK and follow the prompts to re-install PDAComm.



4. Operation

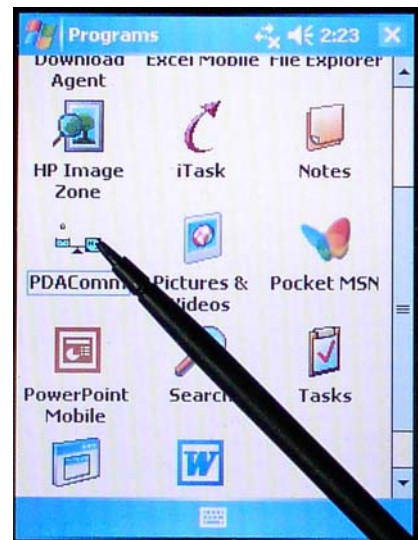
If you plan to communicate through the PDA's Bluetooth interface, then you must initially establish a connection between the PDA and the Bluetooth device before running PDAComm. (**This only needs to be done once !!!**)

- First use the PDA Bluetooth Settings menu to turn the PDA Bluetooth 'ON'.
- Next use the PDA Bluetooth Manager menu to setup the connection between the PDA and the Bluetooth device. See the Hydrological Services BlueComms Operation Manual for a detailed example showing this process.
- The very first time you must also establish the connection – ie. Actually "Connect".

If you are using the PDA's RS232 hardware port, then you can run PDAComm immediately. Note that PDAComm operates at 9600/8/N/1 when connected through a hardware port. Connection through a virtual comm. Port operates at any speed.

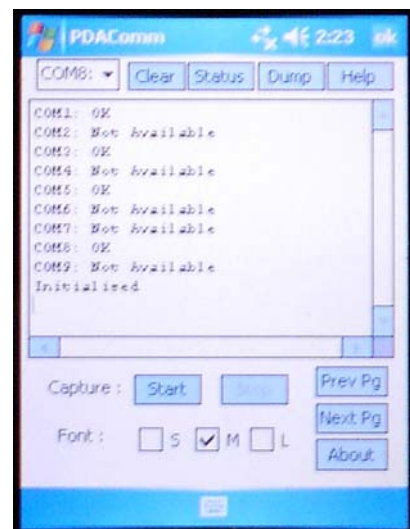
From the PDA main menu select Start – Programs. Scroll up and down to find the "PDAComm" application (with the Hydrological Services logo icon)

Click on the PDAComm icon to start the application.



As the PDAComm application starts, it checks all available comm. ports that are available on the PDA. A list will appear showing what is available. At the end of this process, it will automatically select the COM port that was selected the last time the application was open. (The very first time it will select COM1) It will then display "Initialised"

Click on the COM port drop list to select the required COM port.



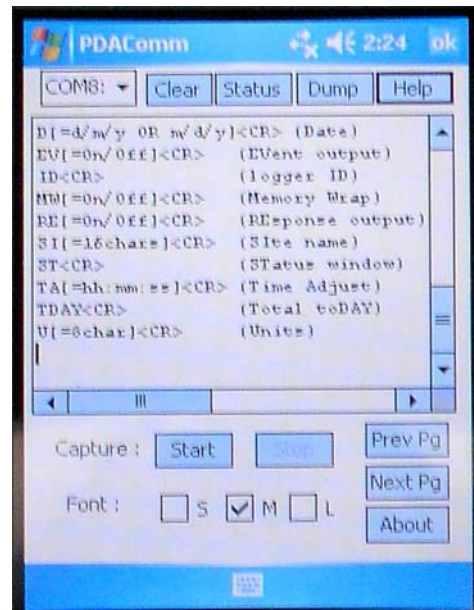
Usually COM1 is the hardware COM port on a PDA and Bluetooth makes use of 2 virtual serial ports : one 'inbound' and one 'outbound'.

The inbound port is for **accepting** 'inbound' serial communications, and the outbound port is for **initiating** 'outbound' serial connections. We need to use the 'outbound' port !!!!

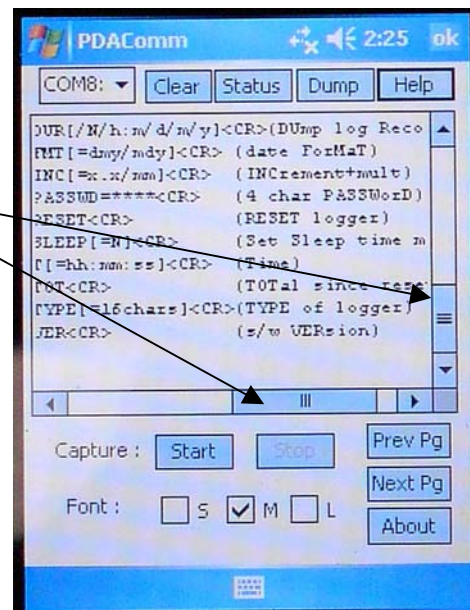
*** **Please note** that the com port assignments are built into your specific PDA and cannot be changed.

Click on the Help button to send the ? command to the MiniLog. You will receive a screen full of help information.

Click on the Font S M or L to select the appropriate font for easy viewing.



Use the horizontal and vertical scroll bars to view data that is not visible.

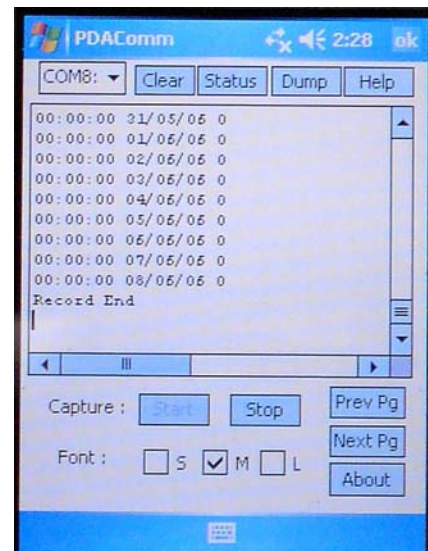


Click on the Start Capture button, enter a file name and select a file location. Click on Save. All data in the comms session (from this point in time on) will be saved into the selected file.



Click on the Dump button to send the DUR command, and retrieve all dump data.

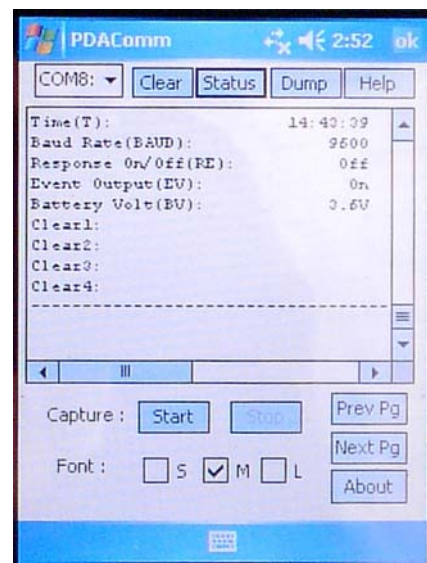
(To abort the dump simply pop up the keyboard and press enter a few times)



Click on the Status button to send the ST command and receive status information back from the MiniLog

When the session is closed, or the Stop Capture button is pressed, the file will be closed.

Click on OK (at the top right hand side of the screen) to close the application.



This data file can then be 'Sync'd to your PC back at the office.